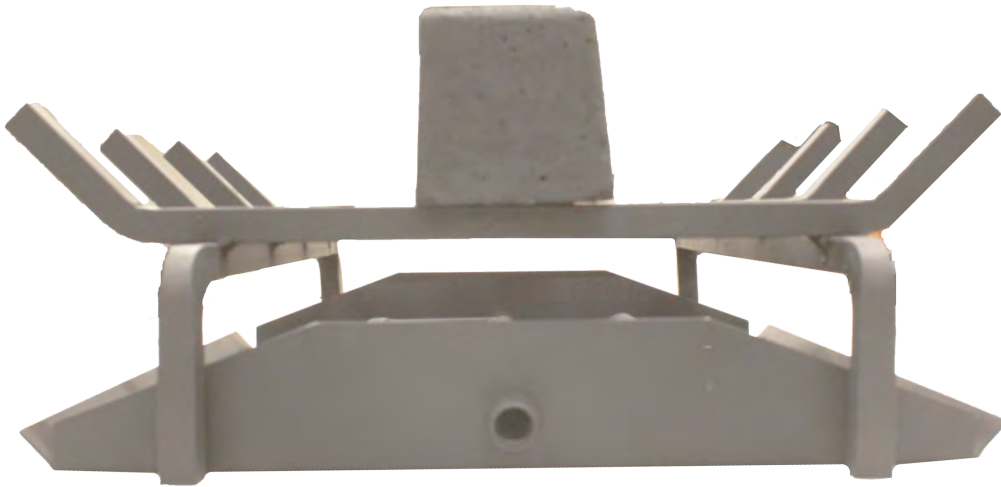


# INFERNO SERIES

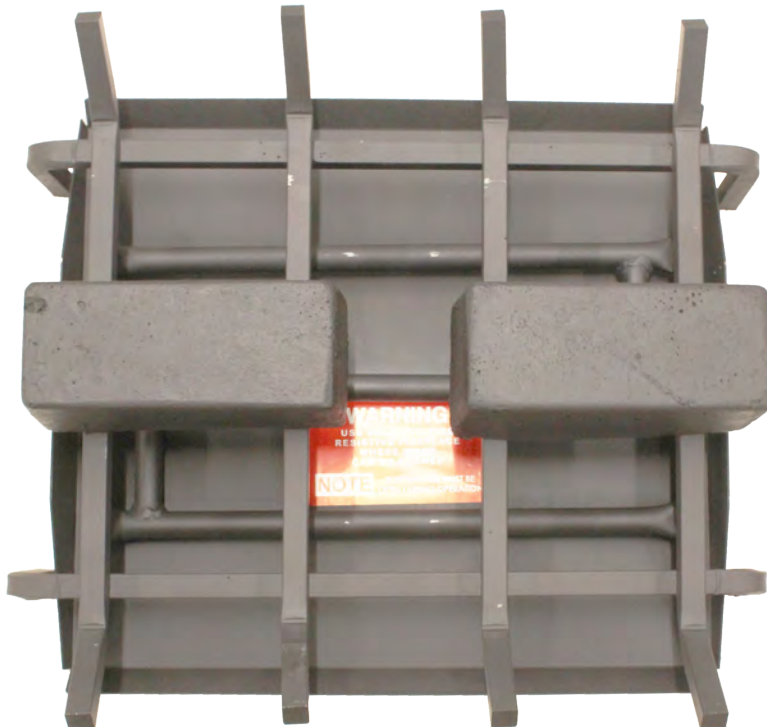
## SUPPORT BLOCK INSTALLATION

---

Side view



Top view



Position the 2 support blocks (SB) on the center of the grate running perpendicular to the grate bars. These will be used to elevate the center log so the remaining logs can be positioned properly following the log diagram. NOTE: 42 and 48 inch sets will include 3 support blocks

# INFERNO SERIES

## SEE-THRU LOG DIAGRAM

ISS1810ST

Step 1 (Top View)



Step 2 (Front View)



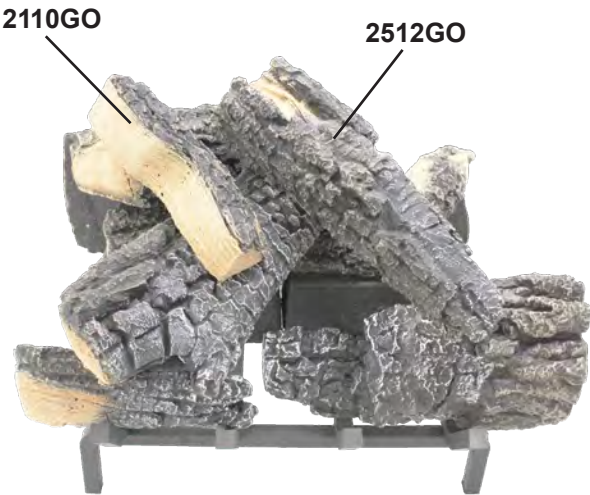
(Back View)



Step 3 (Front View)



(Back View)



# INFERNO SERIES

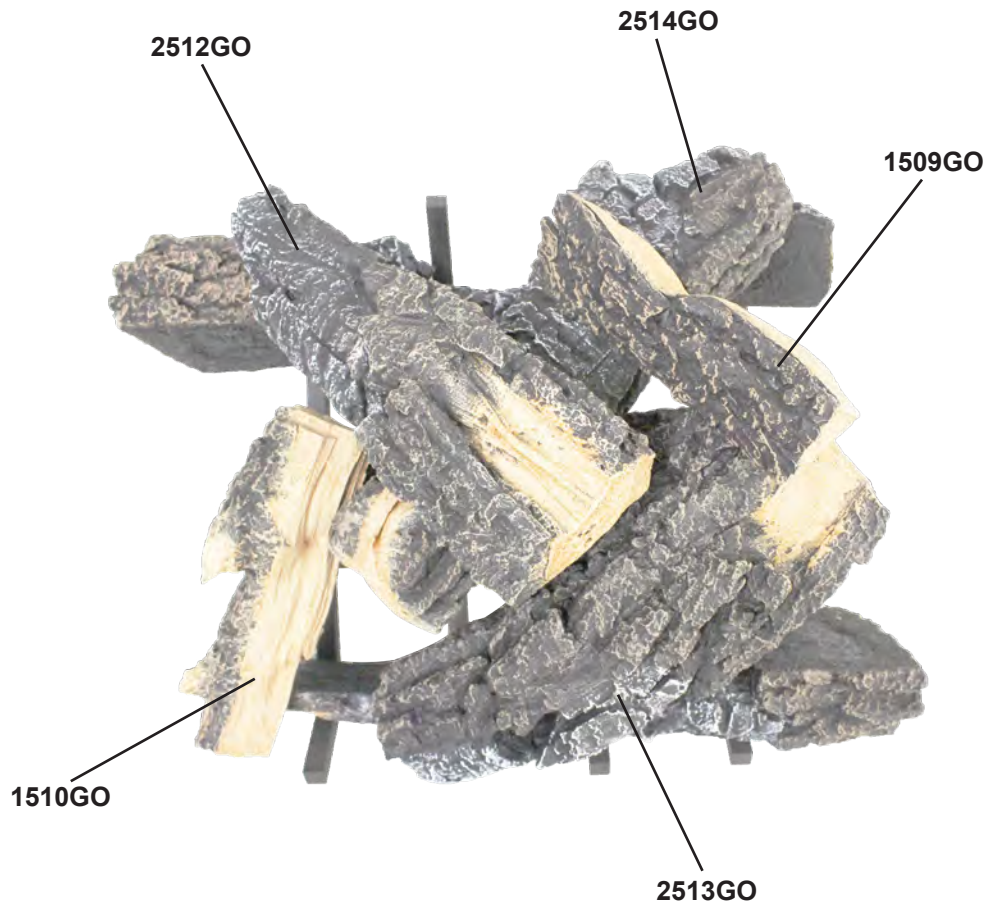
SEE-THRU  
LOG DIAGRAM

ISS1810ST

---

Final

(Top View)





# INFERNO SERIES

## SEE-THRU LOG DIAGRAM

ISS2410ST

Step 1 (Top View)



Step 2 (Front View)

(Back View)



Step 3 (Front View)

(Back View)



# INFERNO SERIES

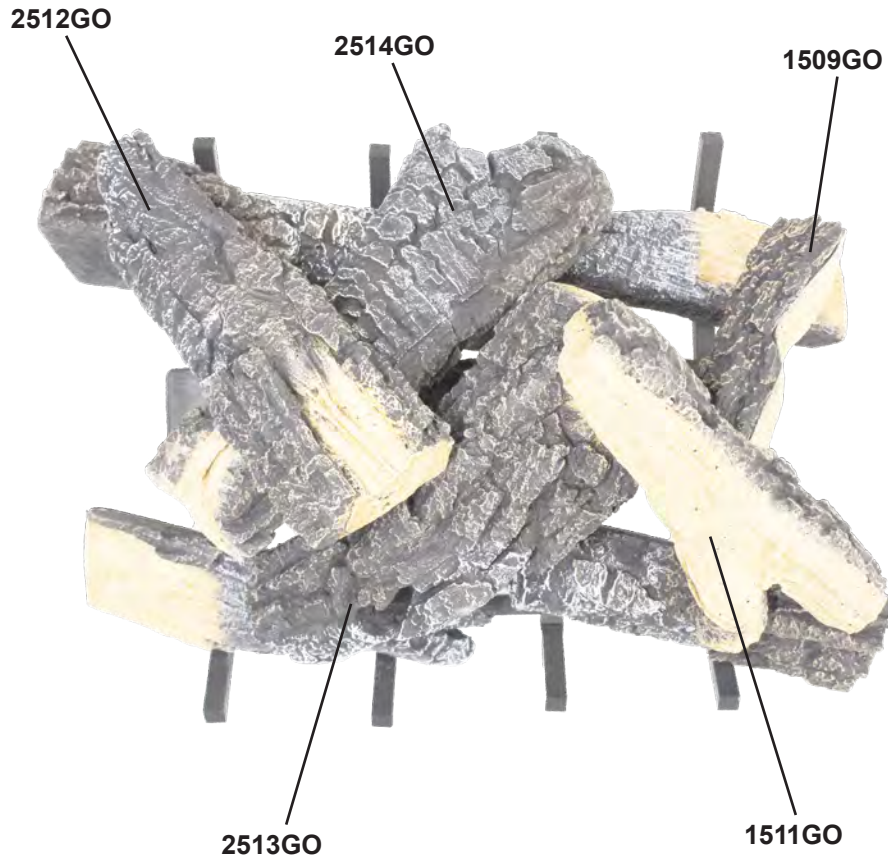
SEE-THRU  
LOG DIAGRAM

ISS2410ST

---

Final

(Top View)

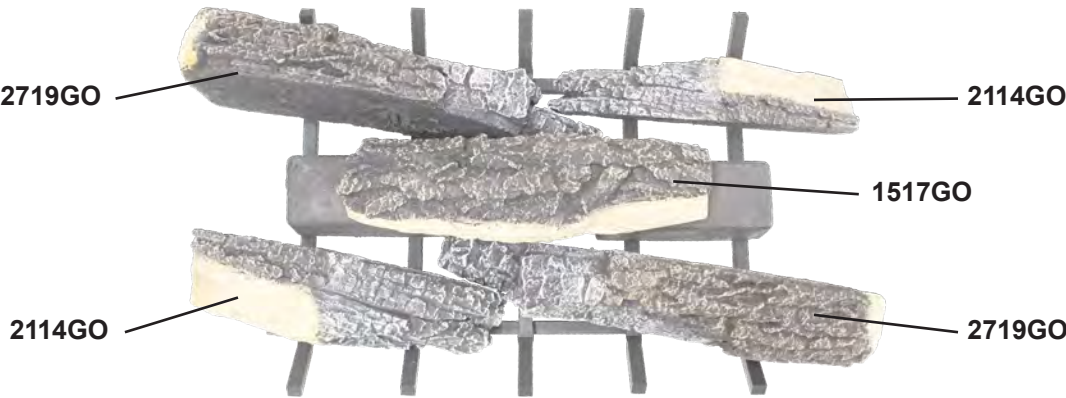


# INFERNO SERIES

## SEE-THRU LOG DIAGRAM

ISS3011ST

Step 1 (Top View)



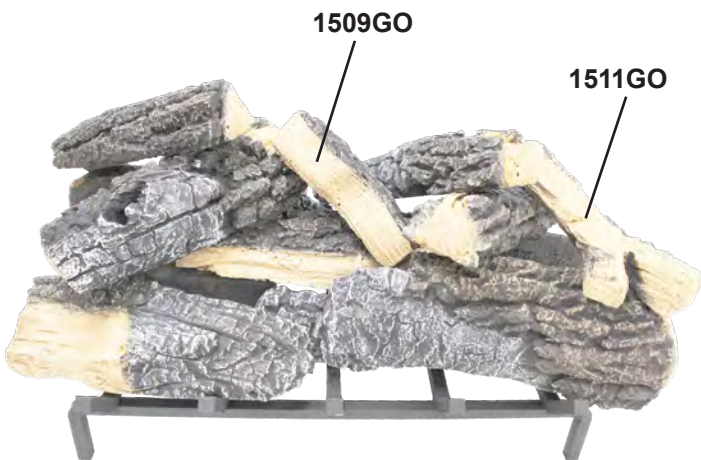
Step 2 (Front View)



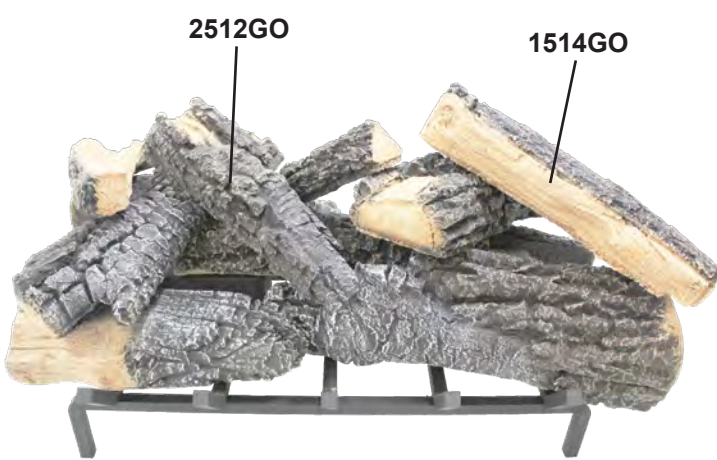
(Back View)



Step 3 (Front View)



(Back View)





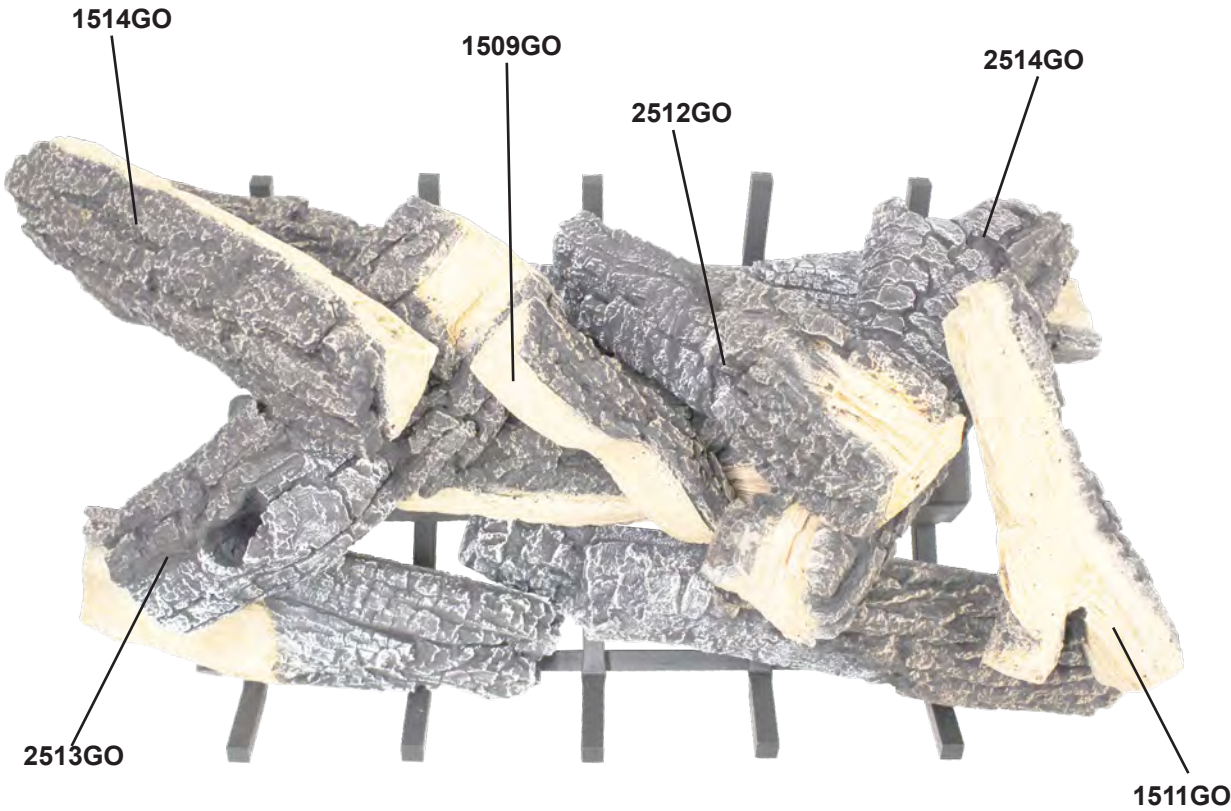
# INFERNO SERIES

SEE-THRU  
LOG DIAGRAM

ISS3011ST

Final

(Top View)



# INFERNO SERIES

## INDIVIDUAL LOG DIAGRAM

1509GO



1510GO



1511GO



1514GO



1517GO



2110GO



2111GO



2114GO



2117GO



2123GO



2125GO





# INFERNO SERIES

## INDIVIDUAL LOG DIAGRAM

2511GO



2512GO



2513GO



2514GO



2522GO



0017GO



2711GO



2714GO



2719GO

